

# TEKTEKSEN SATURNA ISLAND VISITOR SUSTAINABILITY GUIDELINES



**LAND ACKNOWLEDGEMENT:** TEKTEKSEN, "Saturna Island" in SENĆOŦEN, is within unceded traditional territories of the WSÁNEĆ First Nations of the Strait Salish peoples, whose sustainable way of life has nurtured this land, water, plants and animals for millennia

## WATER

- Issues with water quantity and quality on Saturna are complex and challenging to resolve

Follow QR code to find out how you can be proactive when using our shared water supply



SCAN ME

## EXPLORING

"Take only photographs, leave only footprints"

- Keep to the trails to preserve habitats & ecosystems
- Keep pets on a leash when indicated
- Ensure pets do not disturb wildlife (on beaches too!)
- Please clean up after your pets

The island is accessible by walking and biking  
Please ride single file and don't forget your helmet!



SCAN ME

Visitor Map

## BOATING

- No anchoring in Eelgrass conservation areas
- Observe & abide by marine mammal conservation & distance regulations

Example:  
Keep distance of 100 - 400m away from whales (varies by species)

Marine Wildlife Regulations:



SCAN ME

## FISHING & HUNTING

- A government-issued license is mandatory for hunting, fishing and gathering shellfish on the island
- Observe & abide by hunting / fishing regulations, conservation areas and Southern Resident Orca sanctuary zones
- Hunting & discharge of firearms are severely restricted

Please check current regulations at:  
RCMP, Pender Island, 1 (250) 629-6171



SCAN ME

Current Fishing Regulations

## FIRE SAFETY

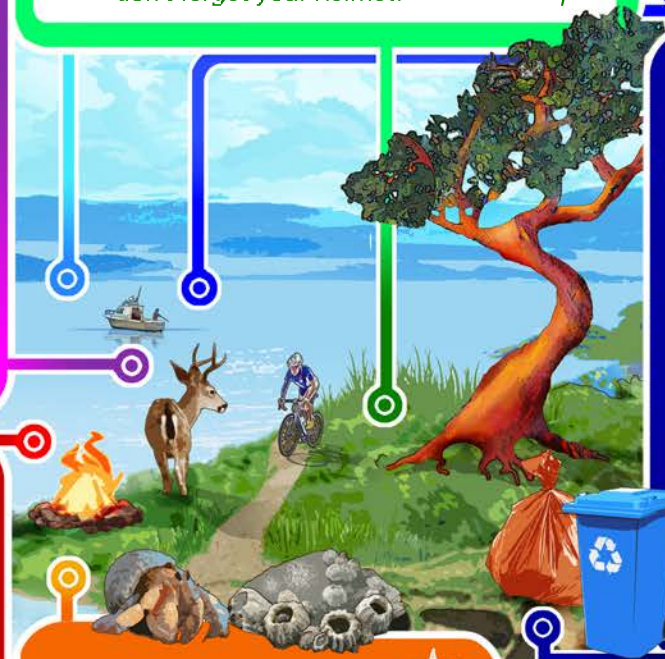
- Fire permits (free) are required and available at Saturna General Store
- Open fires are not permitted during summer months**
- Never burn in strong wind conditions
- Build fire at a safe distance from combustible materials (branches, trees, etc.)
- Category 2 & 3 fires not permitted when venting conditions are "poor" or "fair"
- You must extinguish your fire before leaving the area
- Do not throw cigarette butts on the ground or smoke in the parks

Saturna Island Fire Protection Society



SCAN ME

Current Fire Restrictions



## RECYCLING & GARBAGE

- The community has an extensive recycling program
- IMPORTANT:** You *must* clean and sort your recycling before bringing it to the centre : **101 Harris Road**



SCAN ME

for sorting map or with questions regarding the program, email [saturnarecycling@gmail.com](mailto:saturnarecycling@gmail.com)

: List of Recyclable Items

Garbage - \$12/bag  
Household Recycling - \$6/bag (must be in a clear plastic bag)  
Darryl Davies: [serenityonsaturna@gmail.com](mailto:serenityonsaturna@gmail.com)

## INTERTIDAL ZONES

- Have fun exploring, but avoid handling of marine organisms
- Replace rocks you move - for survival of immobile creatures living on/underneath rocks
- Avoid walking on Eelgrass beds
- Please remove garbage you find on the beach

Current Tide Tables



SCAN ME

